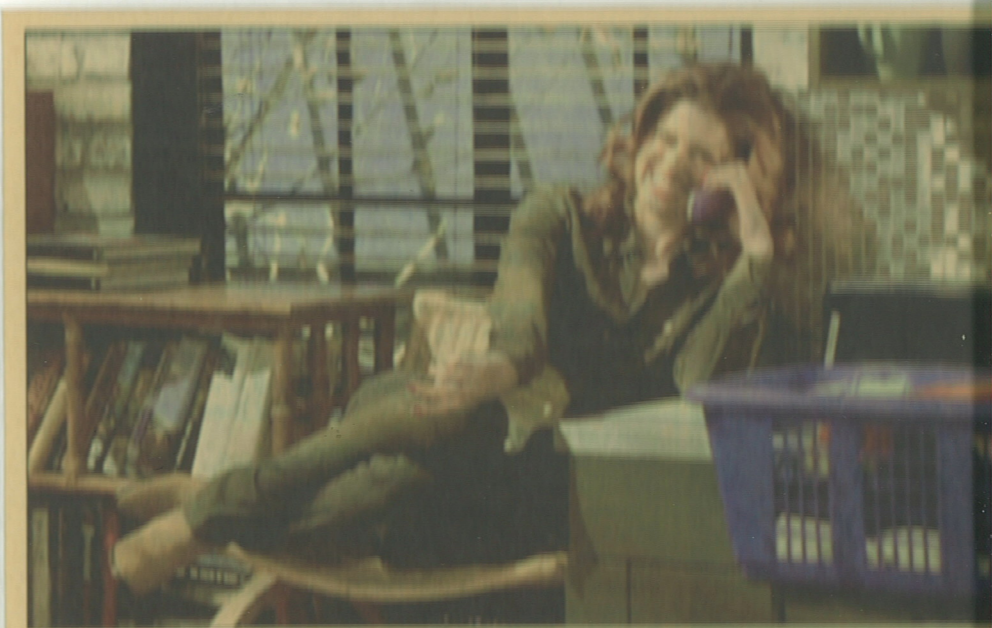


domain

Foot note

Carpet takes a new direction



Aussie magic: Grace is obviously just ecstatic about her Sydney designed splashback tiles.

SPLASH OUT

When you watch *Will & Grace* on TV over the next few weeks, look out for the brushed stainless-steel tile splashback in Grace's kitchen. The mosaic tiles were made by a Sydney design company called Alloy. The show's Los Angeles-based set designers spotted the must-have tiles in Ann Sacks, the firm's American distributor. Alloy says Steven Spielberg and Celine Dion have the tiles in their kitchens. The tiles, \$395 sq m, are available from Artedomus in Alexandria (9557 5000).