

VOCAL LIVING

AUSTRALIA

MILAN '09
DIRECTIONS & TRENDS
FROM THE MOST CREATIVE
DESIGN FAIR ON THE PLANET *p41*

COUNTRY COMFORT
IN COOL DAYLESFORD *p14*

PERTH TO PARIS
CHRISTIAN LYON'S
DECORATING ODYSSEY *p10*

THE NEW
MINIMALISM
*ONCE MORE
WITH FEELING*

L.A. LIVING
WITH MONIQUE
LHUILIER *p154*

ALL AGLOW
LIGHTING
TRENDS *p8*

BOLD
EXPRESSION
IN A MILANESE
APARTMENT *p12*

VINCENT VAN DUYSSEN'S
BELGIAN ELEGANCE *p170*

\$8.50 JULY/AUG '09 NZ \$9.90



9 312966 803009

04

CULTURAL CHANGE

HOT OFF THE BOAT, CORPORATE CULTURE HAS TWO NEW MODELS FROM LEGENDARY DANISH MANUFACTURER FRITZ HANSEN WHICH ARE OF NOTE FOR BOTH THEIR ELEGANT EXECUTION AND FOR THE FACT THAT NON-DANES HAVE DONE THE DESIGNING. THERE ARE THE MODULAR 'ALPHABET' SOFA (NOT SHOWN) BY ITALY'S PIERO LISSONI AND THE 'RIN' CHAIR, BELOW, BY JAPAN'S HIROMICHI KONNO. WWW.CORPORATECULTURE.COM.AU.



AUSTRALIA'S LONGEST-RUNNING DESIGN FESTIVAL, SYDNEY DESIGN 09, CELEBRATES LOCAL AND INTERNATIONAL DESIGN WITH A DIVERSE PROGRAM RUNNING OVER 16 DAYS FROM 1 TO 16 AUGUST 2009. VISIT SYDNEYDESIGN.COM.AU FOR PROGRAM UPDATES.

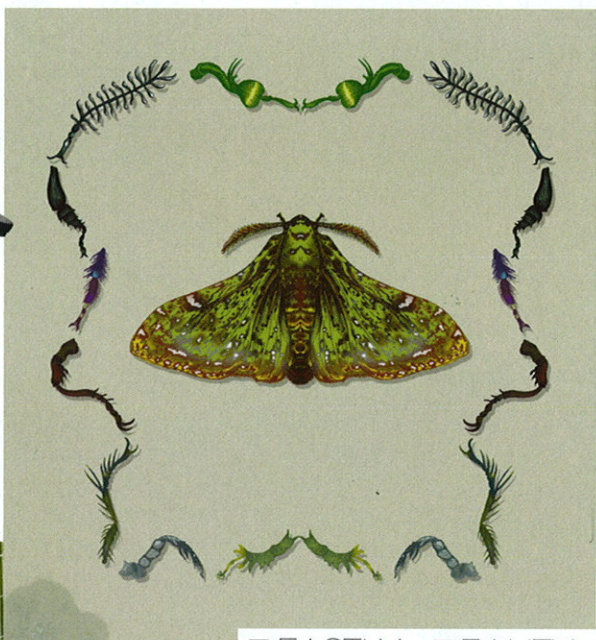


THE INSIDE SCOOP

The national 2009 Interior Design Awards brought together the cream of the crop with a record 407 entries. Announced on May 1 at DesignEx in Melbourne, the winners included Victoria's Leeton Pointon Architects and Susi Leeton Architects who collected three awards for the relaxed, sophisticated interiors of Yarra House, ABOVE LEFT, for Residential Decoration, Colour and Best in State. Melbourne's Carr Courtyard House (Victoria), BOTTOM RIGHT, and Best In State for Queensland went to Ruth Levine and RLD for Norman Reach, TOP RIGHT. For further details visit www.interiordesignawards.com.au.

SHOWSTOPPERS

DESIGN DUO BUSK+HERTZOG'S STORAGE DESIGNS FOR FROST WERE A STANDOUT AT DESIGNEX 2009. DECORATIVE AND USEFUL, THE 'CAMOFLAGE' HOOKS, RIGHT, CAN BE WALL MOUNTED AT DIFFERENT DEPTHS. THE 'WISHBONE' COAT STAND, BELOW, COMES IN FIVE COLOURS. WWW.NOVER.COM.AU.



BEASTLY BEAUTY

PAUL SIMMONS, ONE HALF OF SCOTTISH TEXTILE MAVERICKS TIMOROUS BEASTIES, WILL BE IN MELBOURNE ON 16 JULY AS PART OF FURNITEX'S SEMINAR SERIES TO TALK ABOUT THE EVOLUTION OF PRINTED TEXTILES. ABOVE: ONE OF THE BEASTIES' MOST RECENT DESIGNS (FOR A CHAIR PANEL) IS 'PAPPILION DE NUIT'. HELD IN THE MELBOURNE EXHIBITION CENTRE, BOOKINGS ARE ESSENTIAL ON WWW.FURNITEX.COM.AU; WWW.TIMOROUSBEASTIES.COM.

NEW BOND Karim Rashid has designed solid metal mosaic tiles for Australian company Alloy. Rashid, L&FT, is pictured with Alloy's design director, Jonathon Worner (far left). The range is available from late June. (02) 9565 2422; www.alloydesign.com.au.

